



TROBT23

Transformers: Rise of the Beasts Collector Set

**Transformers: Rise of the Beasts
Central Floating Tourbillon**

10 PIECES

45mm, grade 5 titanium



**KROSS X
STUDIO**

“The Journey Begins”

This is the first time a watchmaking manufacturer has created a piece inspired by the Transformers universe. Since its inception in the 1980s, the franchise has been a crowd-pleaser, enjoying unwavering enthusiasm from a demanding and dedicated community engaged by the battle between the Autobots and Decepticons in movies, TV shows, comic books, innovative toys, and digital media.



“More than meets the eye.”

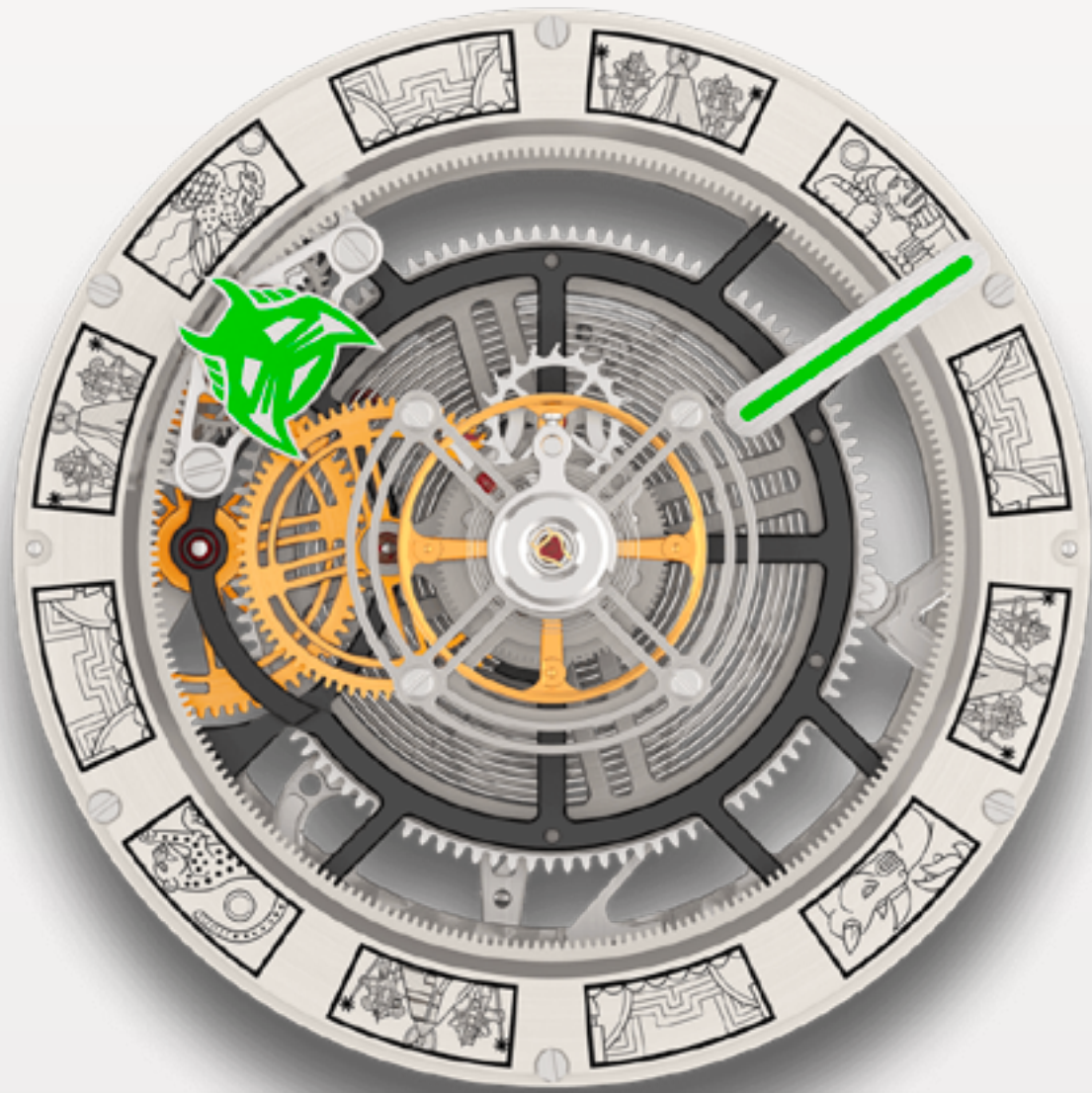
To pay tribute to this universe and its nearly 40-year legacy, Kross Studio drew inspiration from key elements of the franchise as depicted in Steven Caple’s film, such as the Mechatron green, Cybertronix language, Maximal faction emblem, and engravings as seen in the Transformers: Rise of the Beasts movie.



KS 7'005 Caliber

The watch is equipped with the in-house KS 7'005 movement, a central floating tourbillon that is both a visual marvel and a technical wonder, developed and patented by Kross Studio.

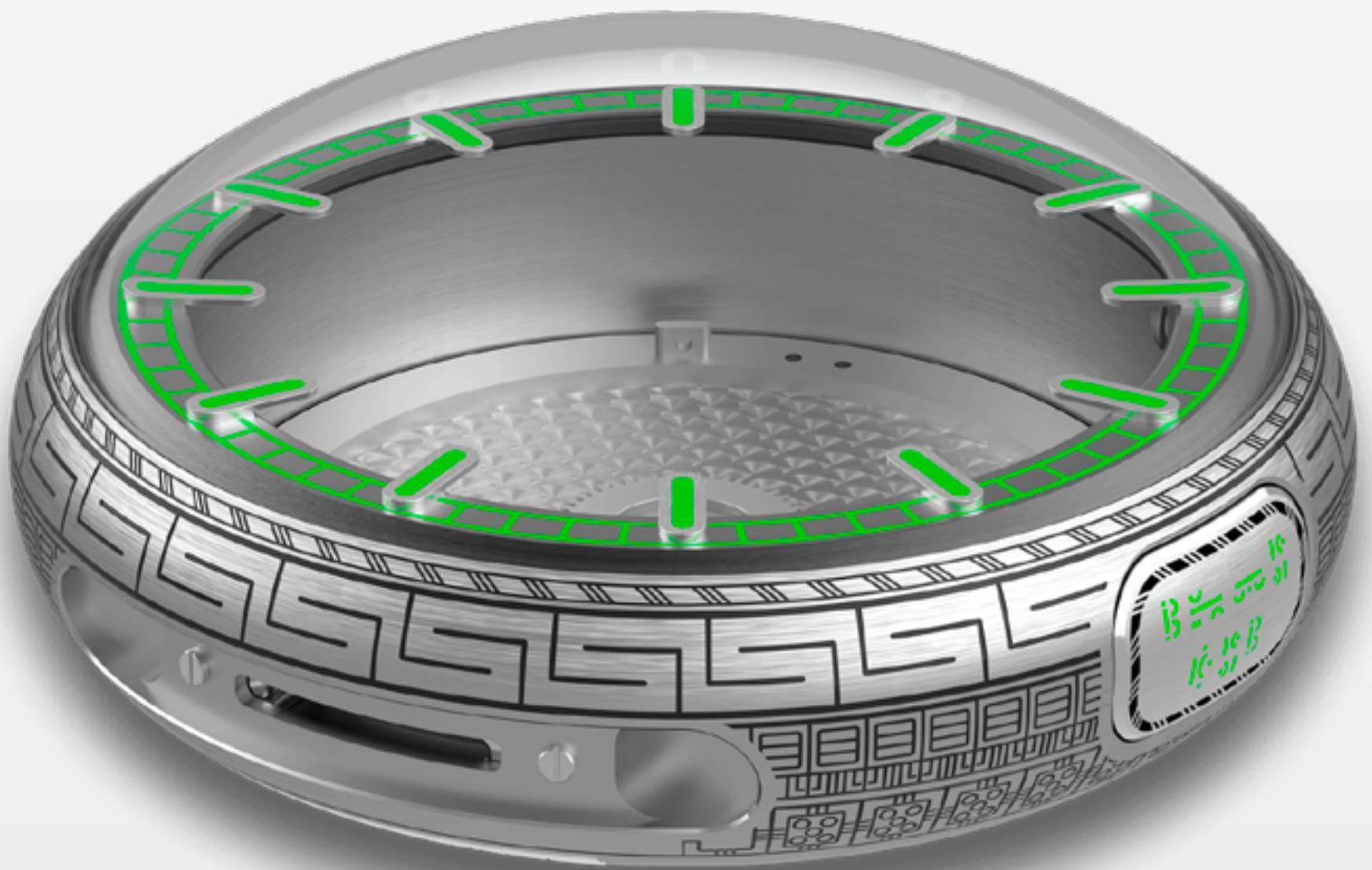
With the tourbillon and its fixed second wheel levitating above the movement and hands, the design provides a never-before-seen perspective into the mesmerizing mechanics of the tourbillon.



Peripheral time display

The hours and minutes are displayed in a unique peripheral format made possible by a planetary gear system that orbits 360° around the tourbillon. A 12-factor gear ratio allows the planetary system to empower the progression of the hours.

Adding to this innovation, the hour-and-minute display system is fixed on two broad, high-precision ball bearings designed to optimize the movement's efficiency as much as possible.



A 45mm titanium case

The circular 45mm case in satin-finished grade 5 titanium housing this exceptional movement has been engraved and filled with black lacquer, intensifying the immersion into the visual universe of the film. The words «Time Set» are engraved in Cybertronix language and filled with Mechatron Green lacquer on the time-setting pusher. The entire scene unfolds beneath a sapphire crystal dome, ensuring the protection of the central tourbillon.



Case Back

On the watch's case back, the Autobot icon takes center stage on the winding and time-setting D-ring key, surrounded by Inca representations of the Maximals.



Ingenious functionalities

Winding the watch and setting the time are effortlessly achieved using the «D-ring crown» on the case back and the «Time Set» push button, strategically positioned at 3 o'clock along the watch's edge. This system not only maintains design symmetry and enhances comfort compared to a traditional crown, but it also facilitates quicker winding, adding a practical touch to the overall experience.



Powerful glowing dial

Green Super-LumiNova® has been carefully applied to the hour hand bearing the Maximal emblem, to the minute track of the rehaut, and to the center of the indexes. The grade 5 titanium dial affixed to the fixed hour wheel has been meticulously adorned with one of the visual pillars of the film, the Inca murals depicting the Maximals' existence on Earth.

Technical Specifications

CASE

Diameter
45mm

Thickness
20mm

**Thickness without
crystal**
12.5mm

Material
Grade 5 titanium

Crystal
Dome-shaped anti-reflective sapphire crystal

Case Back
Grade 5 titanium

Crown
D-ring crown in grade 5 titanium

Water Resistance
30m or 3ATM

MOVEMENT

Caliber
KS 7'005

Functions
Manual-winding
central tourbillon

Height
15.28mm

Overall Diameter
33mm

Power Reserve
5 days

Frequency
21'600 bph / 3 Hz

Jewels
27



Technical Specifications

DIAL & HANDS

Dial

Black inner bezel with green Super-LumiNova® minute markers

Appliques

Rhodium-plated hour markers with green Super-LumiNova®

Hands

Rhodium-plated with green Super-LumiNova®

STRAPS & CLASP

Interchangeable straps

Black calf leather, green stitching, black rubber inlay

Black rubber with a black rubber inlay

Clasp

Grade 5 titanium deployant buckle clasp





Airazor as a functional sculpture

The functional sculpture included with the Transformers: Rise of the Beasts Collector Set is a reproduction of a major enigmatic element from the movie, created in honor of the Maximal Airazor.

Width open 257mm (10.1 inches)	Width close 155mm (6.1 inches)	Height 325mm (12.8 inches)
Weight ≈2.8kg (≈6.1 pounds)	Material Polyresin	

In the set



Transformers: Rise of the Beasts
Tourbillon

Airazor Functional Sculpture

Set of two straps

Owner's book

Microfiber cloth and art gloves