



KS05-TI-TUSP

KS 05 Turquoise Central Floating Tourbillon

Titanium Turquoise Spider

UNIQUE PIECE
45mm, grade 5 titanium



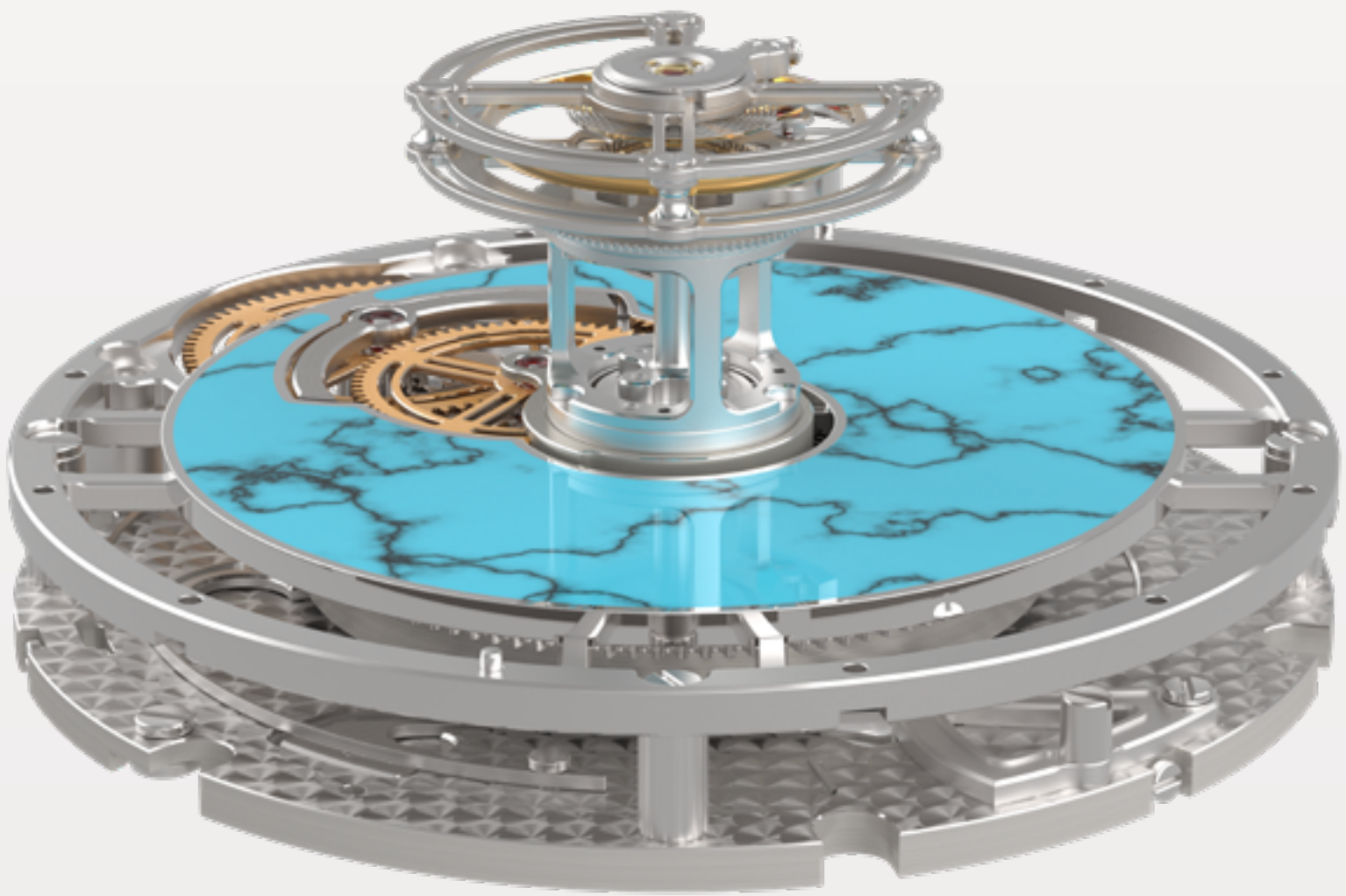
Collection

The KS 05 encapsulates Kross Studio's aptitude for revolutionary timekeeping while maintaining the core principles of traditional watchmaking. This collection heralds a transformative era in luxury timepieces, effortlessly merging artistic craftsmanship, pioneering engineering, and distinctive personal expression. The KS 05 Titanium Turquoise Aventurine watch features a 45mm brushed titanium case housing a turquoise aventurine glass triptych dial and the manufacture's iconic movement, the central floating tourbillon.



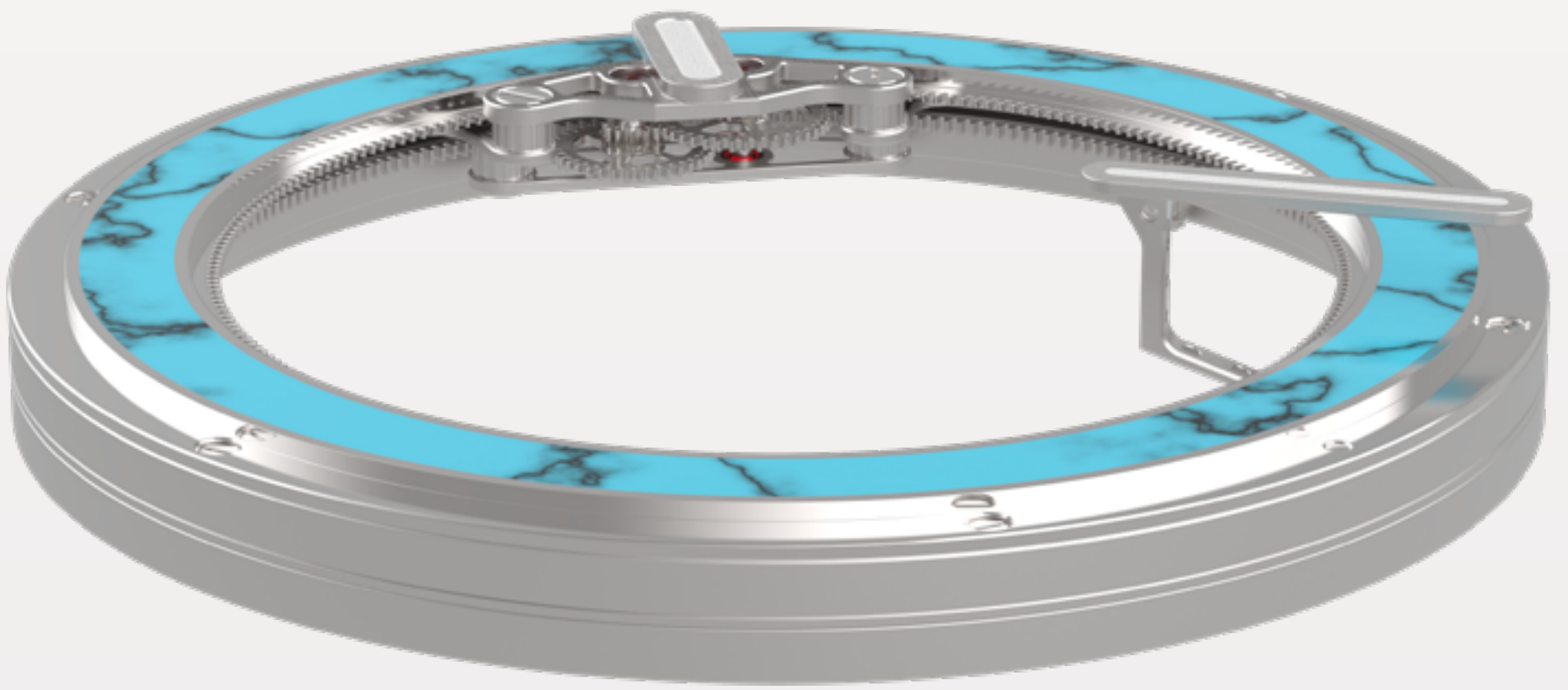
KS 7'005 Caliber

The KS 7'005, a manual winding mechanical movement counts 220 components including 27 jewels, and its construction provides exceptional performance. The main functions such as winding, energy accumulation, regulation, and display are coaxial and placed on the central axis. Thus, the barrel, whose diameter is larger than the radius of the plate, gives the movement a power reserve of 120 hours with chronometric performance.



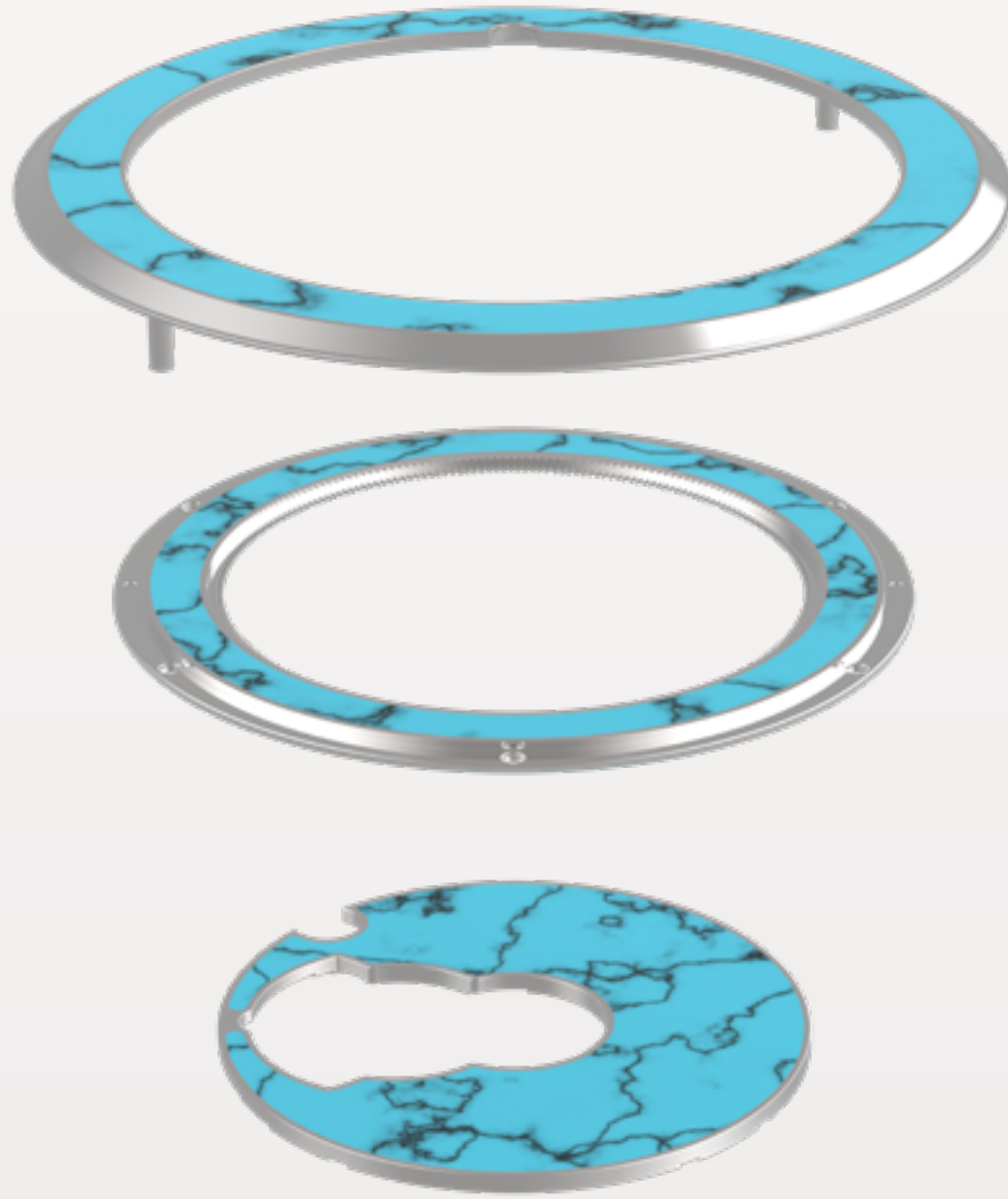
KS 7'005 Caliber

The balance wheel overlooks the barrel, just like the tourbillon and its fixed seconds wheel, which are elevated above the movement and hands. A patented technical innovation, Kross Studio's central floating tourbillon offers a unique perspective on its complex mechanics.



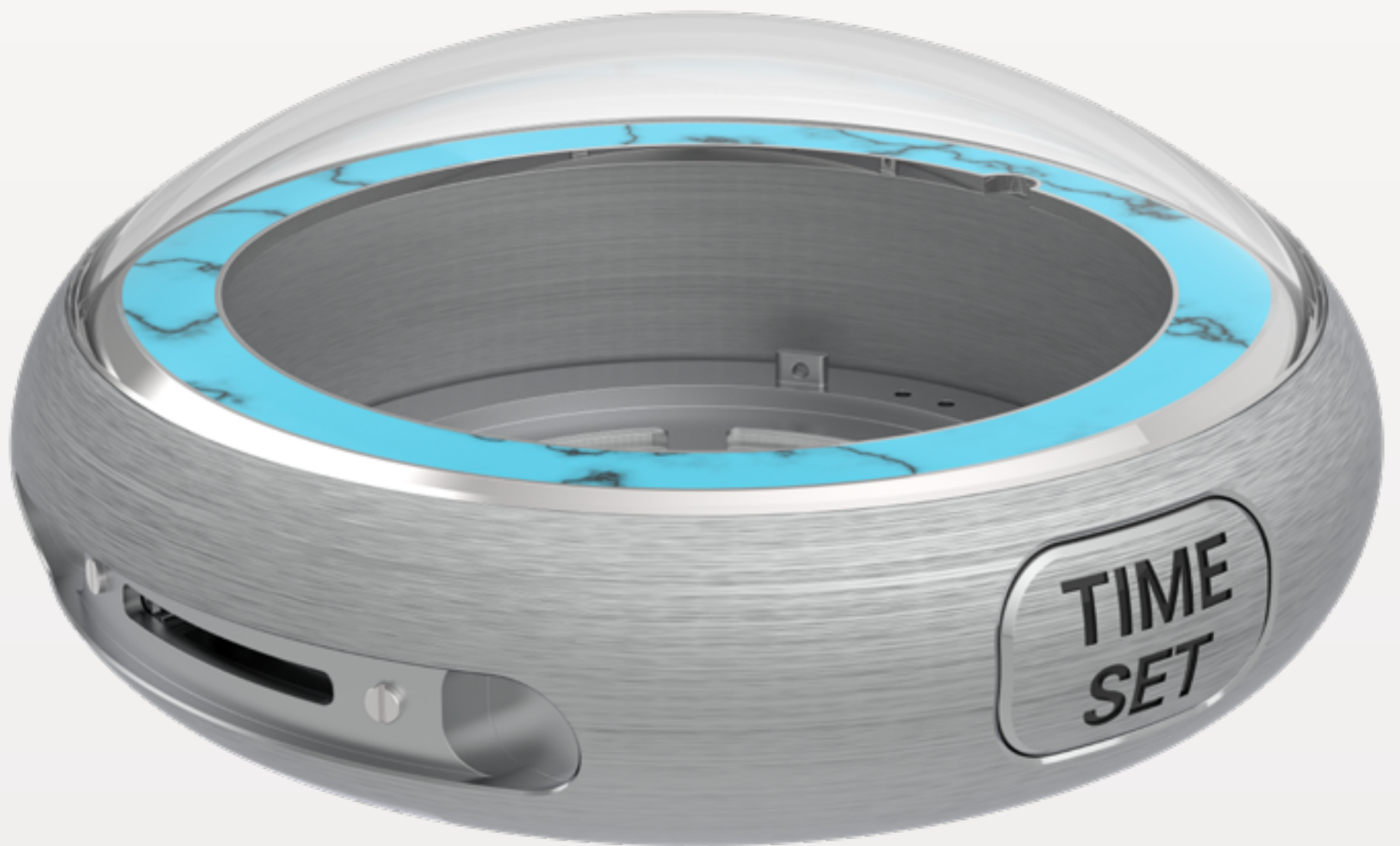
Peripheral time display

The innovation of the KS 7'005 movement also lies in the peripheral hour display mechanism, achieved by a planetary gear system mounted on two ball bearings, freeing the tourbillon from any obstruction.



The dials

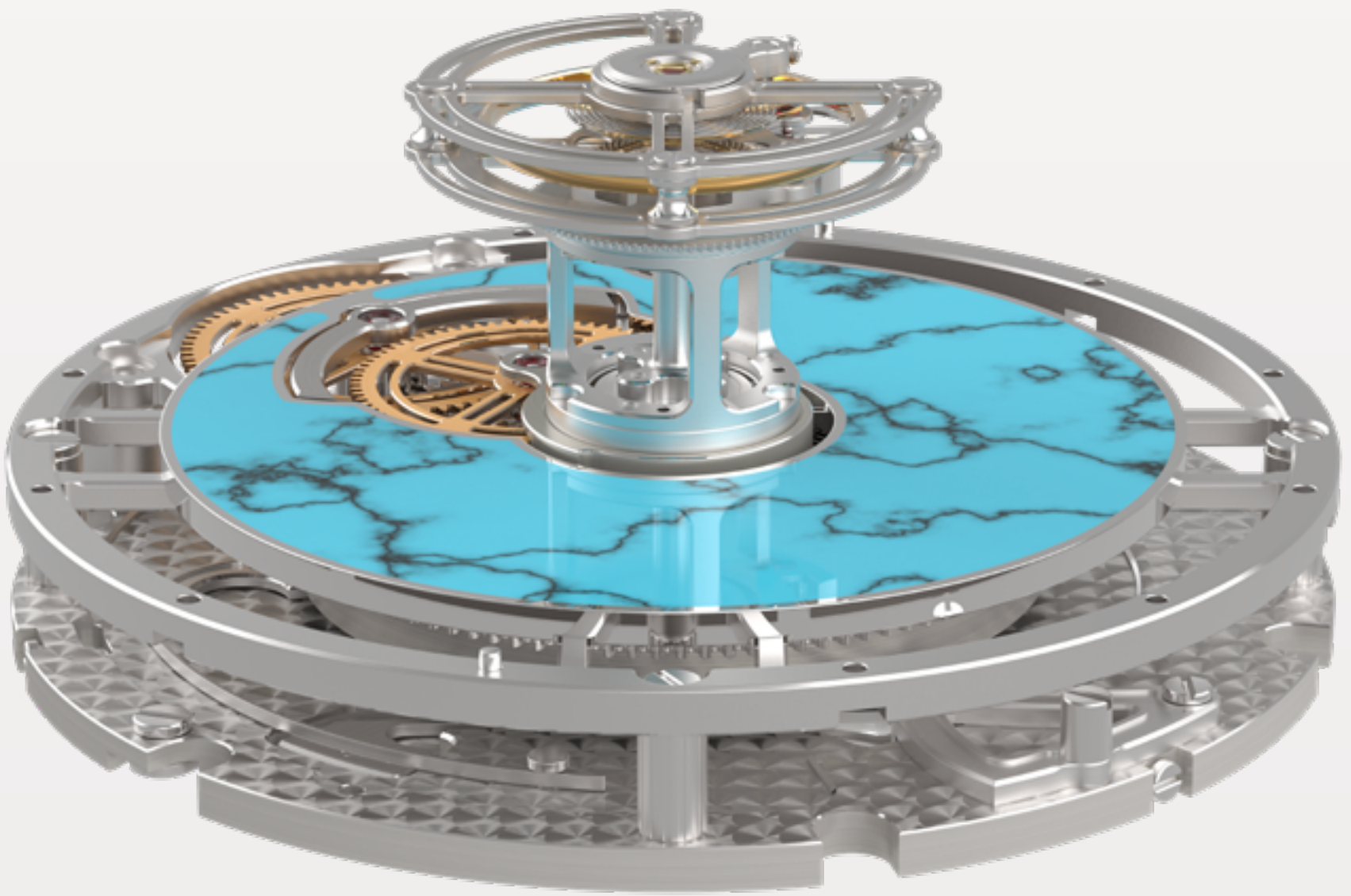
The KS 05 collection offers striking and precious dial variations, each unique iteration composed of several elegant and functional outer and inner sub-dials.



The dials

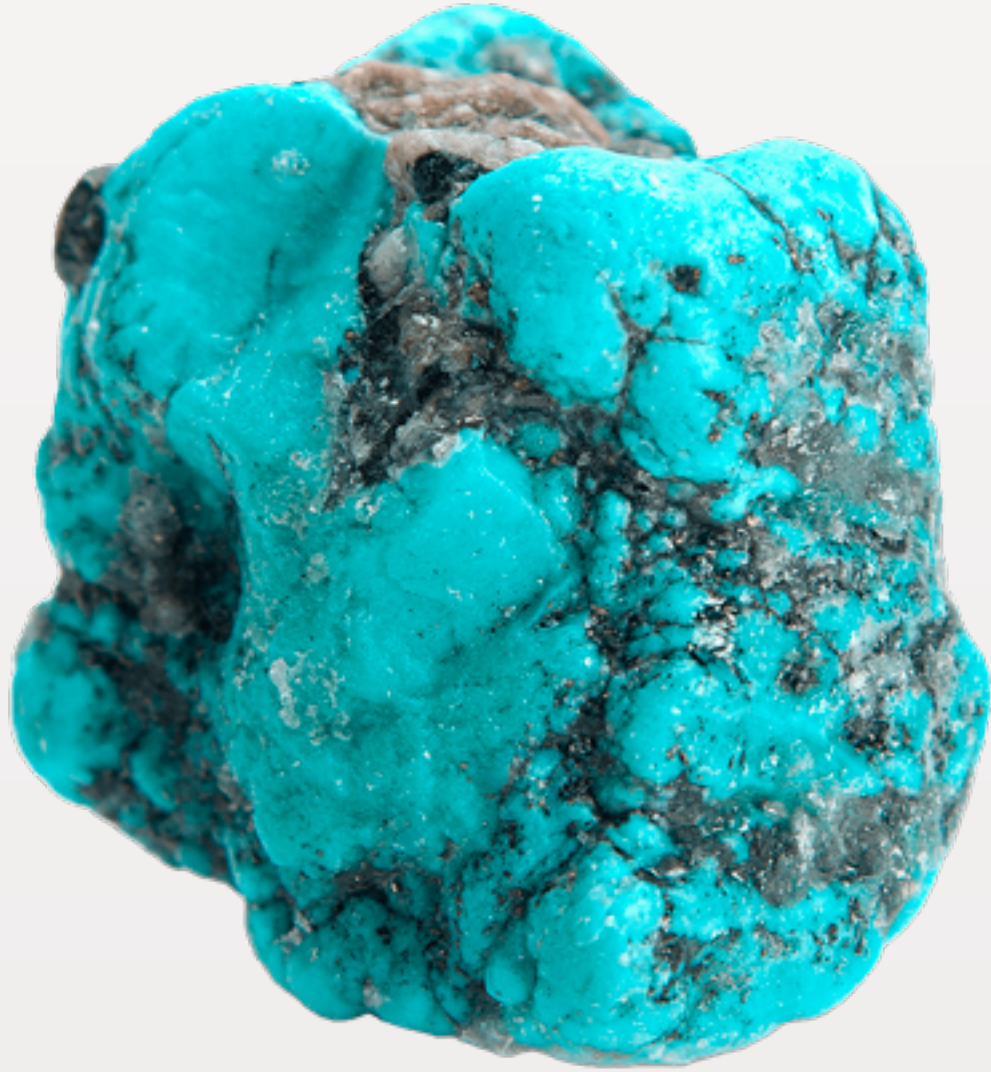
The outer dial, known as the rehaut, is affixed directly onto the case. It carries the time markings and indices, designed here by Kross to promote a highly legible, Instant reading of the time at a glance. Its design and position offer a seamless aesthetic transition from the case to the watch's interior, drawing the eye towards its groundbreaking central floating tourbillon.

The intermediate dial is mounted on top of the movement, specifically on the fixed hour wheel. It serves as a harmonious bridge between the outer dial and the heart of the watch.



The dials

The inner dial, designed with an opening at 9 o'clock, is fixed onto the mainplate of the movement. Positioned beneath the floating tourbillon and the time display mechanism, this innovative dial design allows a clear view onto the gear train and sets a captivating backdrop for the tourbillon, adding depth and setting a visual stage to display the watch's meticulous engineering.



Turquoise

Each sub-dial is crafted of Turquoise spider stone. With striking sky blue to blue-green colors, turquoise has been prized by cultures all over the world for thousands of years and is found in a few places on Earth.



The 45mm case

The case is crafted from grade 5 titanium. Its circular satin finish lends it an elegant and modern aesthetic while providing a pleasant tactile sensation. Devoid of lugs, angles, or even a crown, the case presents a sleek profile that offers an ergonomic wearing experience.



The KS 05 watch's domed and oversized sapphire crystal has received full technical attention: an anti-reflective coating has been applied to both its outer and inner surfaces and anti-UV and anti-static treatments have been applied inside the crystal, making it nearly invisible.



The KS 05 watch's domed and oversized sapphire crystal has received full technical attention: an anti-reflective coating has been applied to both its outer and inner surfaces and anti-UV and anti-static treatments have been applied inside the crystal, making it nearly invisible. It provides an unobstructed, panoramic view of the watch's inner workings.



Case back

On the back of the case, the Studio's signature cross emblem is delicately emphasized on the barrel bridge. The fully skeletonized design provides a deep insight into the meticulously detailed components.

The case incorporates a one-click interchangeable strap system, hidden on the case back, which allows the wearer to swap and update their watch strap with ease.

Technical Specifications

CASE

Diameter
45mm

Thickness
20mm

**Thickness without
crystal**
12.5mm

Material
Grade 5 titanium

Crystal
Dome-shaped anti-reflective sapphire crystal

Case Back
Grade 5 titanium

Crown
D-ring crown in grade 5 titanium

Water Resistance
30m or 3ATM

MOVEMENT

Caliber
KS 7'005

Functions
Manual-winding patented floating central tourbillon

Height
15.28mm

Overall Diameter
33mm

Power Reserve
5 days

Frequency
21'600 bph / 3 Hz

Jewels
27



Technical Specifications

DIAL & HANDS

Dial

Turquoise spider stone triptych dial.
Inner bezel with black minute markers

Hands

Rhodium-plated with white Super-LumiNova®

STRAPS & CLASP

Clasp

Grade 5 titanium deployant buckle
clasp

