



KS05-TI-LALA

KS 05 Lapis Lazuli Central Floating Tourbillon

LIMITED EDITION

45mm



Collection

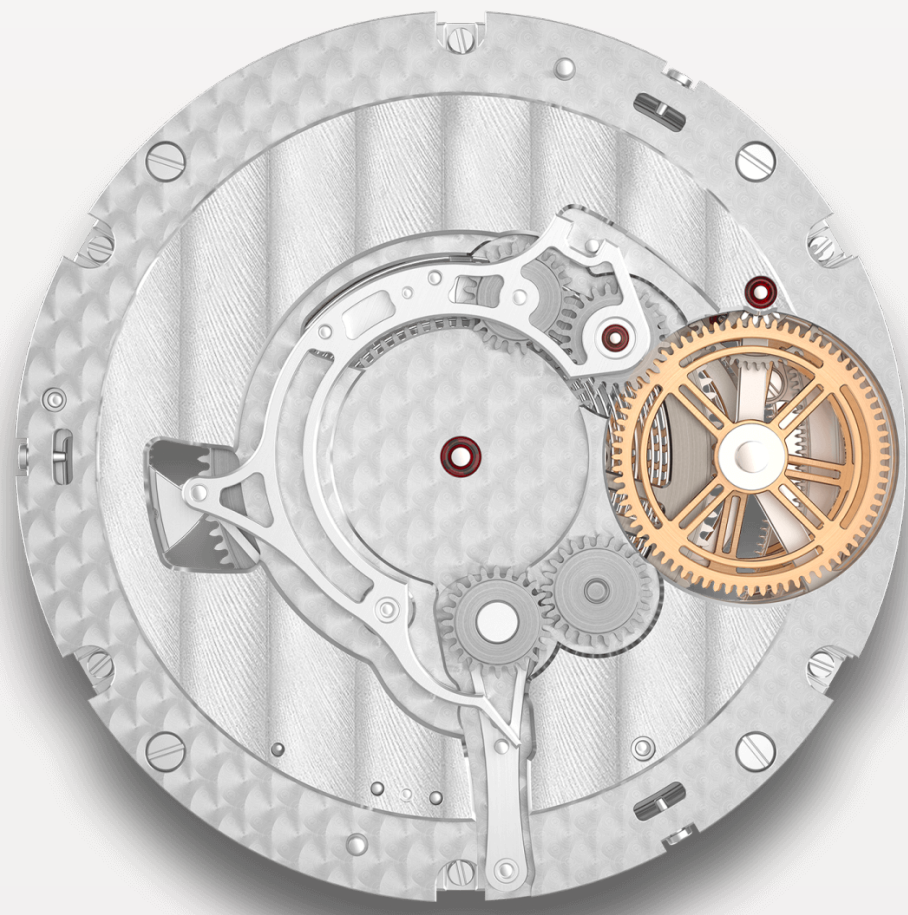
The KS 05 encapsulates Kross Studio's aptitude for revolutionary timekeeping while maintaining the core principles of traditional watchmaking. This collection heralds a transformative era in luxury timepieces, effortlessly merging artistic craftsmanship, pioneering engineering, and distinctive personal expression.

The KS 05 Central Floating Tourbillon Lapis Lazuli comes in a grade 5 titanium and 18-carat pink gold case. Each version can be adorned with 281 pavé-set D-F VVS1 diamonds, for approximately 5.09 carats. Each iteration is limited to 10 pieces.



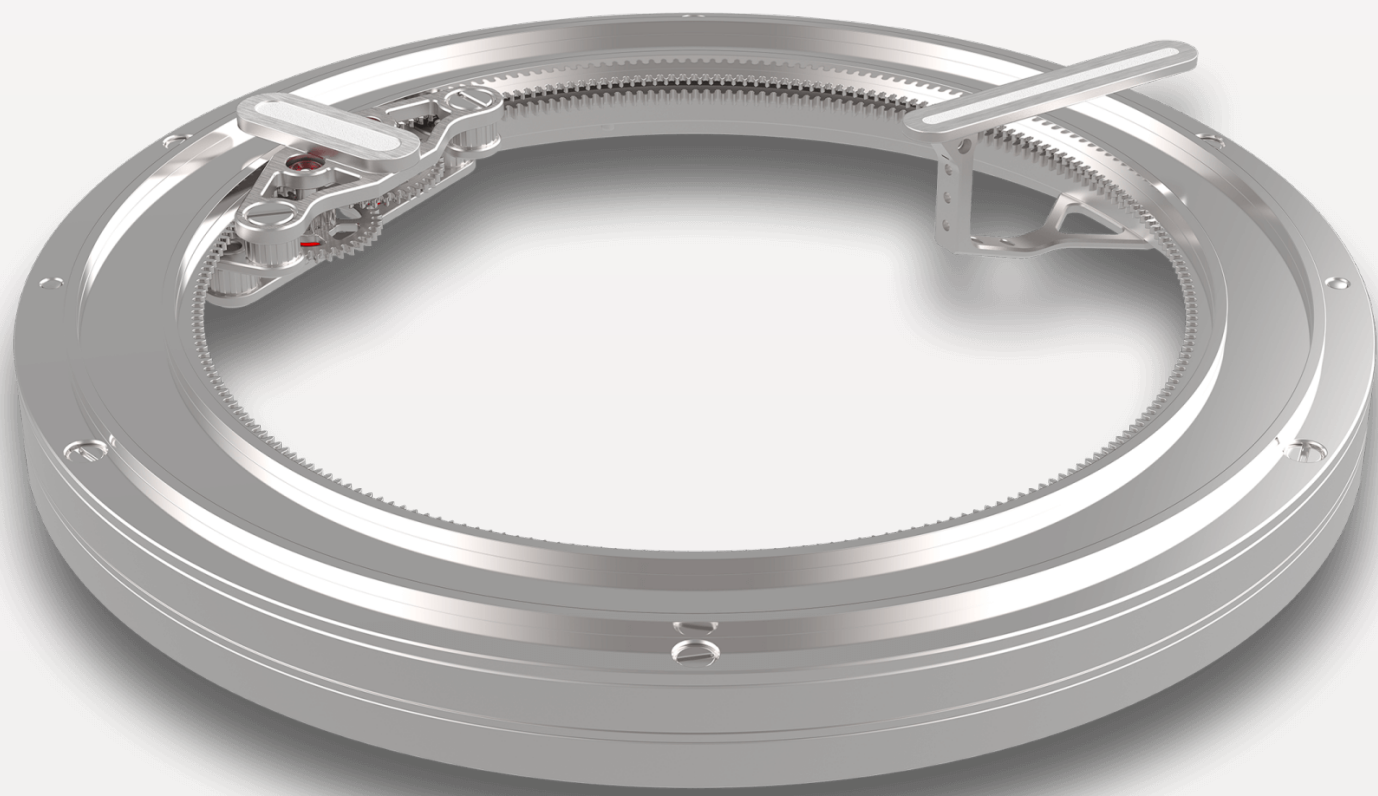
KS 7'005 Caliber

This manual winding mechanical movement counts 220 components including 27 jewels, and its construction provides exceptional performance. The main functions such as winding, energy accumulation, regulation, and display are coaxial and placed on the central axis. Thus, the barrel, whose diameter is larger than the radius of the plate, gives the movement a power reserve of 120 hours with chronometric performance.



KS 7'005 Caliber

The balance wheel overlooks the barrel, just like the tourbillon and its fixed seconds wheel, which are elevated above the movement and hands. A patented technical innovation, Kross Studio's central floating tourbillon offers a unique perspective on its complex mechanics.



Peripheral time display

The time display mechanism operates peripherally, working around the barrel and the tourbillon mechanism. The peripheral display orbits 360 degrees around the tourbillon, and the reduction ratio between the hour and minute is achieved through a planetary system mounted on two ceramic ball bearings.



The dials

Crafted of Lapis Lazuli glass, it gives the watch a nice shimmering touch. The watch is composed of several elegant and functional outer and inner sub-dials.

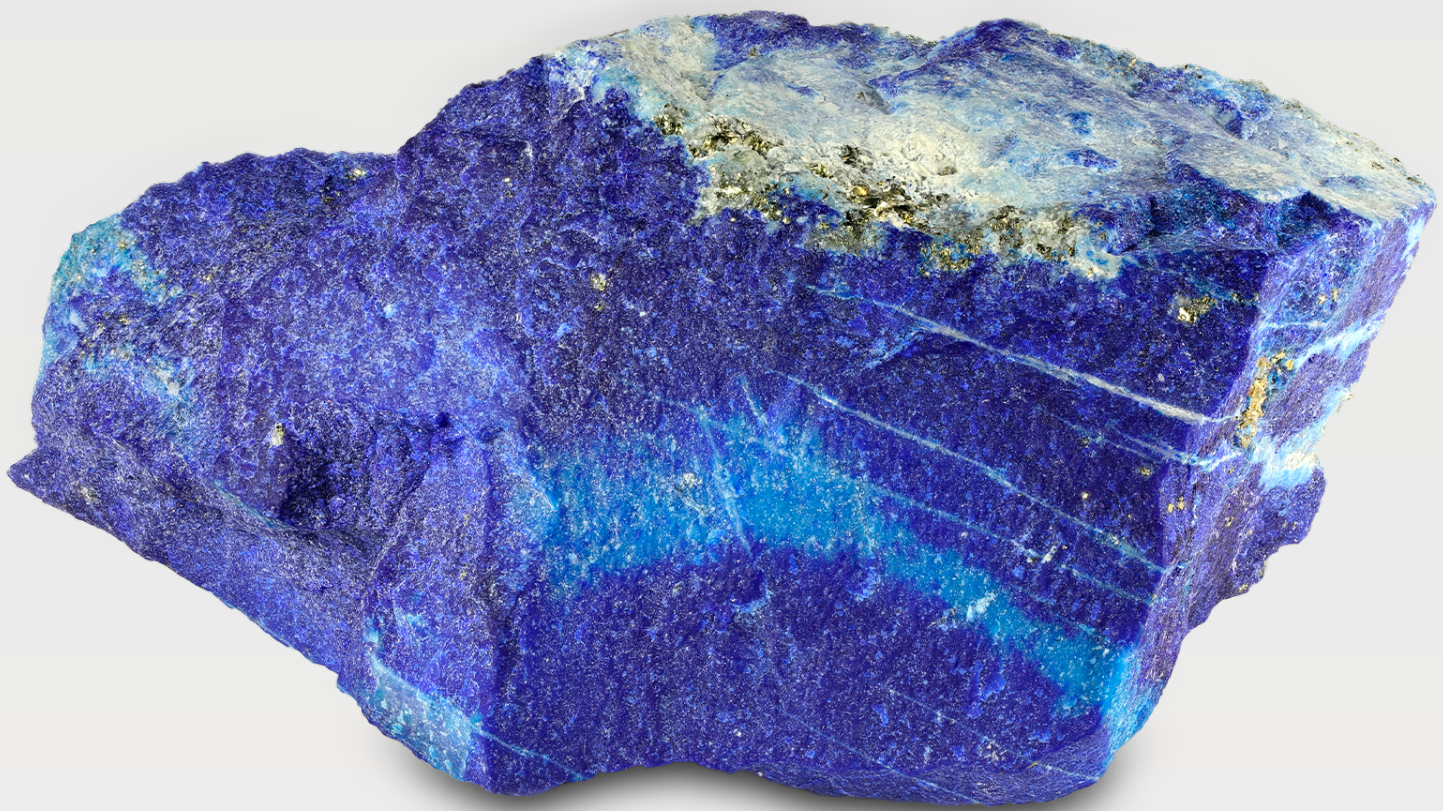
The outer dial, known as the rehaut, is affixed directly onto the case. It carries the time markings and indices, designed here by Kross to promote a highly legible, instant reading of the time at a glance. Its design and position offer a seamless aesthetic transition from the case to the watch's interior, drawing the eye towards its groundbreaking central floating tourbillon.



The dials

The intermediate dial is mounted on top of the movement, specifically on the fixed hour wheel. It serves as a harmonious bridge between the outer dial and the heart of the watch.

The inner dial, designed with an opening at 9 o'clock, is fixed onto the main plate of the movement. Positioned beneath the floating tourbillon and the time display mechanism, this innovative dial design allows a clear view onto the gear train and sets a captivating backdrop for the tourbillon, adding depth and setting a visual stage to display the watch's meticulous engineering.



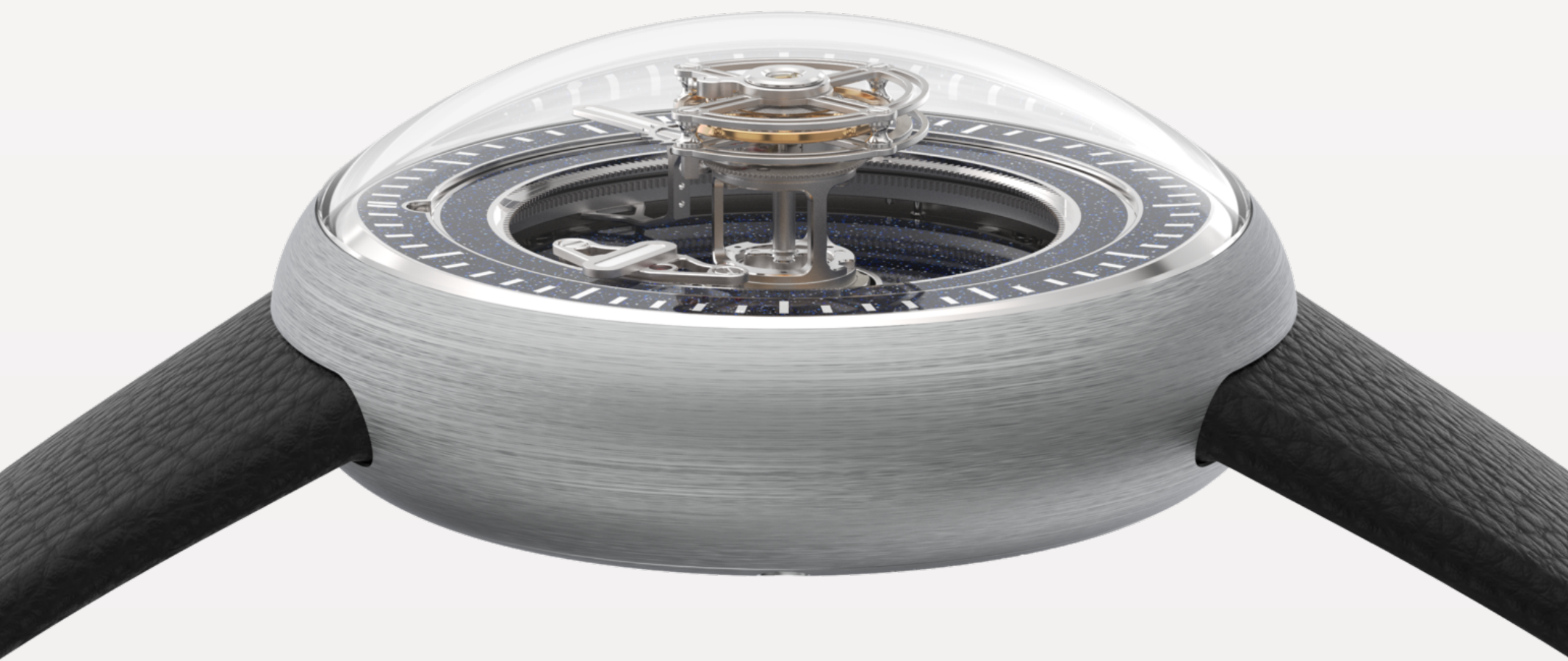
Lapis Lazuli

Each sub-dial is crafted from lapis lazuli stone, which captivated humanity for millennia, thanks to its deep blue color punctuated by golden flecks of pyrite and sometimes white veins of calcite. It primarily forms in limestone rocks through a metamorphic process that results in the concentration of lazurite minerals, which give it its characteristic blue color.



The 45mm case

Devoid of lugs or edges, the KS 05 case exhibits a sleek, seamless, and ergonomically optimized profile. Instead of a visible crown at 3 o'clock, Kross Studio opted for a clever D-ring crown integrated into the case back, which enables winding and time adjustments without disrupting the watch's clean lines.



A crystal dome

The crystal also receives full technical consideration, with an anti-reflective coating on both its exterior and interior, and the application of an anti-UV and anti-static treatments to the crystal interior.



Case Back

The D-ring crown is integrated into the case back, which enables winding and time adjustments without disrupting the watch's clean lines.

An interchangeable strap system is also incorporated, hidden on the case back, which allows the wearer to swap and update their watch strap with ease.

As a final touch, the Studio's signature cross emblem is delicately emphasized on the barrel bridge.



Collection

The KS 05 Central Floating Tourbillon Lapis Lazuli comes in a grade 5 titanium and 18-carat pink gold case. Each version can be adorned with 281 pavé-set D-F VVS1 diamonds, for approximately 5.09 carats. Each iteration is limited to 10 pieces.

Technical Specifications

CASE

Diameter

45mm

Thickness

20mm

Thickness without crystal

12.5mm

Material

Grade 5 titanium or
18-carat pink gold case

Crystal

Dome-shaped anti-reflective sapphire crystal

Case Back

Grade 5 titanium

Crown

D-ring crown in grade 5 titanium

Water Resistance

30m or 3ATM

MOVEMENT

Caliber

KS 7'005

Functions

Manual-winding
patented floating central
tourbillon

Height

15.28mm

Overall Diameter

33mm

Power Reserve

5 days

Frequency

21'600 bph / 3 Hz

Jewels

27

Technical Specifications

DIAL & HANDS

Dial

Lapis Lazuli stone triptych dial

Hands

Rhodium-plated with white Super-LumiNova®

STRAPS & CLASP

Clasp

Grade 5 titanium deployant buckle clasp

