

GAME OF THRONES™
HOUSE OF THE
DRAGON™

KROSS X
STUDIO

**GAME OF THRONES - HOUSE OF THE DRAGON
COLLECTOR SET**

GAME OF THRONES™
HOUSE OF THE
DRAGON™

KROSS X
STUDIO

**Kross Studio presents a new collection
in collaboration with Warner Bros.
Discovery Global Consumer Products**

GAME OF THRONES - HOUSE OF THE DRAGON COLLECTOR SETS

**The Swiss design studio reinterprets
the codes of fine watchmaking
by drawing inspiration from the
legendary world of “Game of Thrones”
and “House of the Dragon”.**

Renegade design studio and watch manufacturer Kross Studio once again pushes the boundaries by introducing a series of collector sets, each one dedicated to a dragon from the Game of Thrones franchise. The limited-edition sets include both a Kross Studio central floating tourbillon watch and a dragon egg functional sculpture. Each one-of-a-kind set in the series is dedicated to a single dragon from the fantasy epic “Game of Thrones” and its successor series, “House of the Dragon.” These masterfully crafted works of art seamlessly blend inspiration from the iconic world of Westeros with cutting-edge watchmaking.



The ultimate Targaryen-inspired Timepiece

The central tourbillon, designed by Kross Studio Founder Marco Tedeschi, was crafted with all the precision and elegance a member of the Targaryen family would demand for a custom commission. The watch embodies the Targaryen's distinct aesthetic codes, from its opulent watch case to the intricate details of its movement. Tedeschi masterfully merged traditional watchmaking techniques with modern design, resulting in a timepiece that truly captures the essence of Targaryen royalty.



Floating in the skies

The tourbillon cage of the manual-winding patented floating central tourbillon is a visual marvel. Like a dragon gliding across the heavens looking down from above, the floating central tourbillon's suspension just below the sapphire crystal dome offers a breathtaking view of the inner workings of the watch beneath it. With the tourbillon and its fixed second wheel levitating above the movement and hands, the design provides a never-before-seen perspective into the mesmerizing mechanics of the tourbillon. This innovative design feature provides the opportunity to fully admire this masterpiece of horology from every angle.



Reading the time

The hours and minutes are displayed in a unique peripheral format made possible by a planetary gear system that orbits 360° around the tourbillon. A 12-factor gear ratio allows the planetary system to empower the progression of the hours.

Adding to this innovation, the hour-and-minute display system is fixed on two broad, high-precision ball bearings designed to optimize the movement's efficiency as much as possible.

Crafted in Kross Studio Manufacture

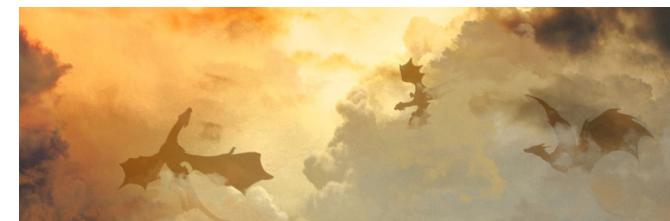
This remarkable complication is a testament to the pinnacle of horological expertise, brought to life by the master artisans at Kross Studio Manufacture. The collaboration between the technical office and skilled craftspeople in each department, including the newly integrated finishing section, has driven the creation of truly extraordinary works of art.



Valyrian steel

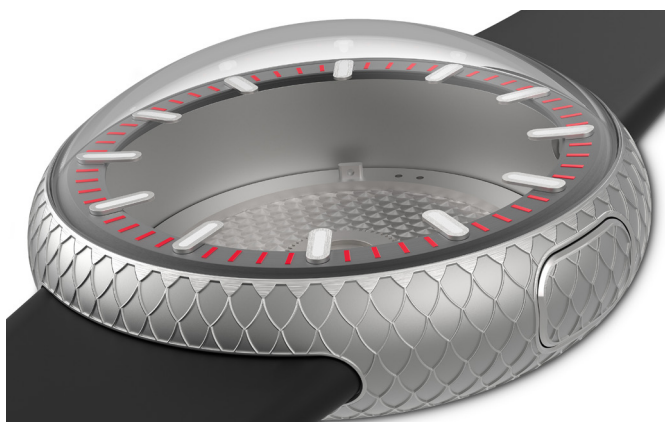
The watch's design synthesizes key elements of the fantasy series and its renowned dragons, such as its dial, made of Damasteel®. Reminiscent of Valyrian steel, fans will recognize its striated appearance, made up of multiple dark and shimmering layers. The Damascus steel used in the GOT Dragon Central Tourbillon dial is crafted by Damasteel, the same foundry that forged the metal used in the HBO series' swords.

The ergonomic, grade 5 titanium watch case imitates the scales of a dragon through intricate three-dimensional engraving. Furthermore, the Targaryen House sigil, a three-headed dragon breathing flame, is placed in the center of the watch case back. Each case back is uniquely identified by the engraved name of the singular dragon that inspired the collector set, with only one set dedicated to a single dragon.



**“Dreams didn’t make us kings.
Dragons did”**

- Daemon Targaryen



There will be dragons

The Targaryen house's prestige and its dragon bond are inextricably, transcendently linked across ages, myth, and memory. The dragons embody the ultimate power and loyalty and inspire awe and fascination. Kross Studio looked to dragon's origins, their eggs, to inspire this collector set's unique functional sculpture.

The Dragon Egg Functional Sculpture, designed by Marco Tedeschi, is produced in collaboration with French workshop Leblon Delienne, long renowned for their incomparable expertise in crafting pop sculptures.

Each resin Dragon Egg has been painstakingly airbrushed to create a unique finish that is wholly individual, and each's design draws inspiration from a particular dragon. The outer shape of the egg was created using a 3D scan of the TV show props.



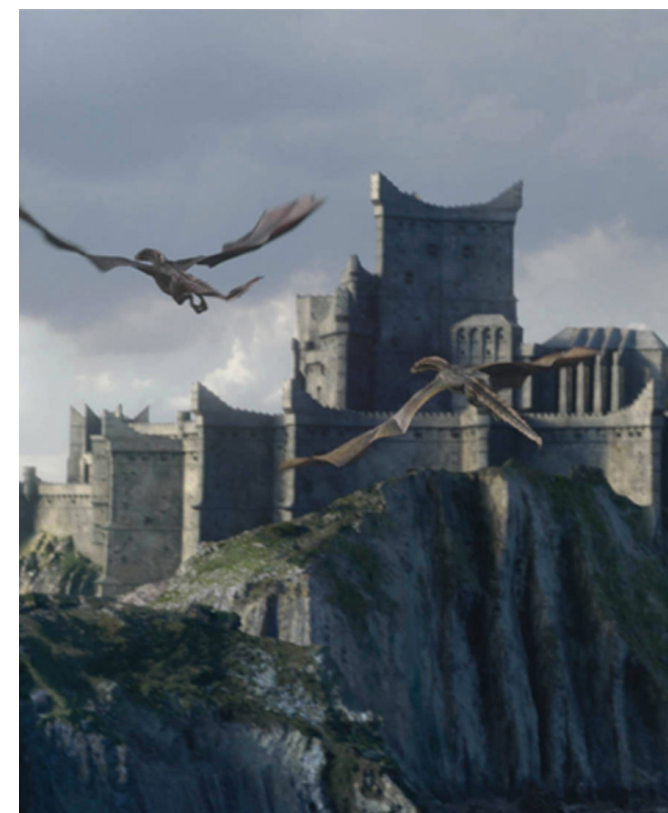
The egg opens to serve as a nest, to store the Kross Studio Floating Central Tourbillon timepiece or any watch of choice. The design was carefully planned down to the smallest detail. The watch base features seven slots: one for each of the saga's seven kingdoms. The two towers that hold the watch cushion are inspired by the design of Dragonstone castle, the ancestral seat of House Targaryen.

From the delicate details showcased in the tourbillon watch to the impressive functional sculpture elements, the collector set represents the epitome of luxury and exclusivity, a must-have for any fan of the series, fine art collector, and connoisseur of the art of watchmaking.

The five unique collector sets revealed are the first of more to come. Each will be dedicated to the dragons presented in the fantasy saga "Game of Thrones" and its prequel "House of the Dragon" including Drogon, Rhaegal, Viserion, Syrax and Caraxes.

Kross Studio Game of Thrones - House of the Dragon Collector Sets (CHF 108'000.- each) will be available for individual sale at [kross-studio.com](https://www.kross-studio.com), or through official partners and select authorized retailers.

All episodes of "Game of Thrones" and "House of the Dragon" are available to stream on HBO Max.



ABOUT

Kross Studio is the leading next-generation Swiss design studio and manufacturer, founded in 2020 by Marco Tedeschi with a vision to erase the boundaries between fine art, pop culture, and high-end product design. Kross Studio produces immersive, expertly engineered, and highly collectible art objects that defy categorization.

Just two years into its inception, Kross Studio has already established ongoing collaborations with the world's leading entertainment companies, including Lucasfilm Ltd. and Warner Bros. Consumer Products, to create richly imagined collector's items and collector sets that fuse beloved pop cultural iconography with high-end finishes, a hint of nostalgia, and hyper-creative horological elements. Enter the universe of Kross Studio at kross-studio.com.

Warner Bros. Discovery Global Consumer Products (WBDGCP), part of Warner Bros. Discovery Global Brands and Experiences, extends the company's powerful portfolio of entertainment brands and franchises into the lives of fans around the world. WBDGCP partners with best-in-class licensees globally on award-winning toy, fashion, home décor and publishing programs inspired by the biggest franchises from Warner Bros.' film, television, animation, and games studios, HBO, Discovery, DC, Cartoon Network, HGTV, Eurosport, Adult Swim, and more. With innovative global licensing and merchandising programs, retail initiatives, and promotional partnerships, WBDGCP is one of the leading licensing and retail merchandising organizations in the world.

CONTACT

media@kross.studio
kross-studio.com



TECH SPECS

DRAGON CENTRAL FLOATING TOURBILLON

Parts
298

Each watch is a unique piece

Movement

Caliber KS 7'005	Jewels 27
Functions Manual-winding patented floating central tourbillon	Power reserve 5 days
Parts 220	Frequency 21'600bph / 3Hz

Case

Materials Engraved grade 5 titanium	Diameter 45mm
Dome-shaped anti-reflective sapphire crystal	Thickness 20mm
Water resistance 30m or 3ATM	Thickness without crystal 12.5mm

Case back

Material
Grade 5 titanium

Interchangeable straps

Each unique piece comes with two customized set of straps.

The deployant buckle clasp is in Grade 5 titanium with or without black or brown PVD, depending on the straps and the watch.

DRAGON EGG FUNCTIONAL SCULPTURE

Materials
Resin
Watch cushion in microfiber cloth

Dimensions
Ø 168mm (6.6 inches)
Height with base 231.5mm (9.11 inches)
Height without base 214.90mm (8.4 inches)

Weight ≈ 2.2g (≈ 4.8 pounds)